

Date Issued	Sept 24
Replaces	



## Helpful Information for You and Your Pool

### Algae and Coatings

Hi Performance Coatings provide a hard seamless and impervious coating to a pool surface which is resistant to algae attack and growth.

However, you may sometimes see a green-brown-black “stain” on the surface.

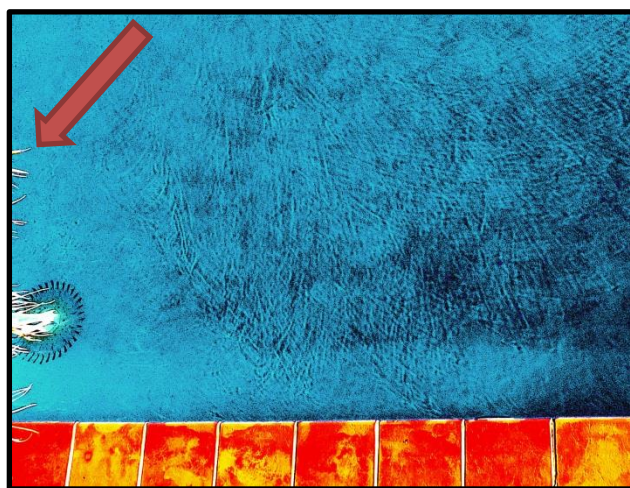
By brushing it or running your hand over the surface you will often see dirty coloured particles in the water immediately above the brushed – rubbed surface. This is indicative of algae being present.

Algae are small plants that are propagated by air-borne spores. They enter swimming pools and quickly turn the water green. When conditions favor their growth, they can cause black and/or green spots on pool walls and floors. Heavy rain, intense sunlight, and presence of nitrogenous material all contribute to algae bloom - as the rapid growth of algae is called. Sometimes algae bloom results in a sharp rise in pH, as the algae consumes carbon dioxide in the pool water. If algae bloom is present, super chlorination can be used. Then an algaecide will control it and prevent its reoccurrence. Discuss your pool with your pool shop for more advice.

Also, if you have overhanging vegetation, live in a windy area with vegetation nearby or have a “hot” pool, then chances are you will get some algae outbreaks from time to time.

There may be “stains” that develop on the surface and be stubborn to remove. They may be in some areas and not others and they may give the impression by showing roller or brush lines.

In areas where the original surface is smooth the resulting coating will be smooth too and little or no “staining” will be seen. Other areas where the original surface is rough may show “stains” as the coating follows the surface profile coating mountains and valleys, yet the algae will fall into the valleys and show as random areas or highlight the roller or brush lines.



Here we can see “stains” moving away from the creepy crawler towards the right-hand corner where the surface is quite rough. The original pool surface area around the creepy crawler is quite smooth and thus clean as the coating is smooth also and follows the profile.

There is over-hanging vegetation just visible on the far left as well. (see arrow)

So, in this case the overhanging vegetation has led to matter falling into the pool, rotting and in areas where the original concrete surface is rough, with hills and valleys, algae forming in the bottom of the valleys, highlighting them. Yet it looks like the coating is faulty.

Treatment is quite straightforward, remove all overhanging or nearby vegetation, including palm trees

and resultant seeds and nuts. Then use a good algaecide (from pool shop), some brooming and vacuuming to remove residues.

Hi Performance Coatings, being seamless and with a hard surface is resistant to attack by algae though it may show up as “stains” simply due to the algae being on the surface and following any profiles, such as valleys and filling them with material, thus creating a “stained” surface appearance.