



## THE AUSSIE POOL OWNER'S BUYER'S GUIDE

### *Choosing the Right Pool Surface for Your Home*

*A practical booklet for new owners, renovators, and anyone weighing up durability, cost, and long-term value.*

---

## INTRODUCTION

Building or renovating a swimming pool is a major investment, and the interior finish you choose will shape everything from how your pool looks and feels to how much maintenance it needs over the years. Some finishes last a lifetime, others are short-term solutions. Some give you that luxury resort shine, while others offer a tough, family-friendly surface that can handle kids, heat and constant use.

This buyer's guide breaks down each surface in plain English so you can make a confident, informed decision that suits your backyard, lifestyle and budget.

---

## CHAPTER 1

### Start With Your Budget

Every pool finish has its own price bracket, and it's important to match the surface to what you're comfortable spending — not only today, but over the next 10, 20, or even 30 years.

#### Budget Categories at a Glance

- **Low Cost:** Paints (acrylic, chlorinated rubber), vinyl liners
- **Mid-Range:** Marblesheen (rare today), fibreglass resurface, some quartz finishes
- **Higher Range:** Pebblecrete, premium quartz
- **Premium Range:** Full interior tiling (ceramic, porcelain or glass)

#### Booklet Tip:

Sometimes paying more upfront actually saves you thousands later. A cheap surface replaced every 5 years can cost more over time than a premium finish that lasts 30+ years.

## CHAPTER 2

### How Long Do You Want It to Last?

Your pool surface lifespan makes a huge difference to long-term costs and enjoyment. Here's how long each surface typically lasts with good water balance:

#### Short-Term Surfaces

*(1–10+ years)*

- Acrylic paint (1-2 years)
- Chlorinated rubber paint (2- 3 years)
- Vinyl liners (5 – 10 years)
- Epoxy paint (5 – 10 years)
- Fluoropolymer paint (7 – 10+ years))

#### Medium-Term Surfaces

*(10–20 years)*

- Marblesheen
- Some quartz finishes
- Fibreglass gelcoat in average conditions

#### Long-Term Surfaces

*(20–30+ years)*

- Pebblecrete
- Quality quartz
- High-grade fibreglass resurfacing

#### Lifetime Surfaces

*(30–50+ years)*

- Full interior tiling (ceramic, porcelain or glass)

#### Booklet Tip:

If you're upgrading your "forever home," invest in a finish that won't need a facelift every decade.



## CHAPTER 3

### Comfort Matters — How Does the Surface Feel?

The pool surface affects safety and comfort, especially for kids, older adults, and people with sensitive skin.

#### Smoothest Surfaces

- Fibreglass
- Tiles (glass or porcelain)
- Vinyl liner
- Paint

#### Moderately Smooth

- Quartz / Quartzon
- Polished pebble finishes
- Marblesheen

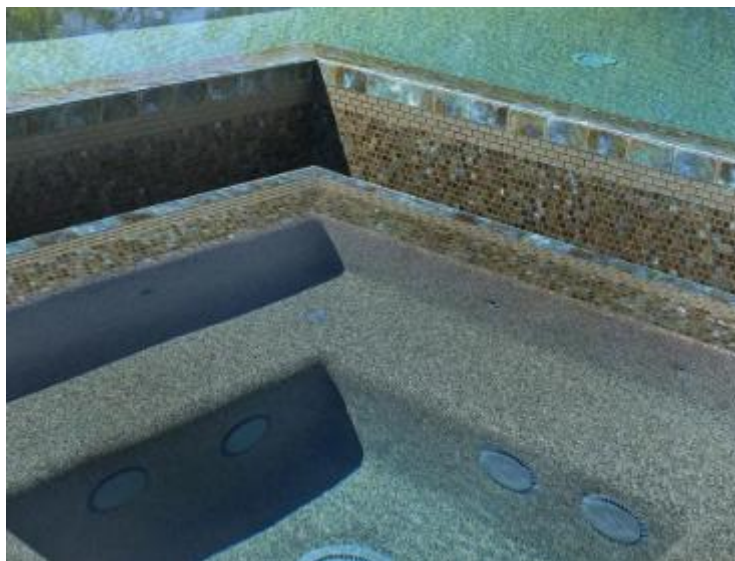
#### Textured / Natural Feel

- Standard pebblecrete
- Larger pebble finishes

#### Booklet Tip:

Think about how you actually use your pool. Little kids? Go smooth. Want that natural, lagoon vibe? Pebblecrete is perfect.

---



## CHAPTER 4

### Maintenance & Water Chemistry Tolerance

Some pool finishes demand careful water balancing. Others are more forgiving.

#### High-Maintenance / Sensitive

- Marblesheen (easily etched or stained)
- All paint types
- Vinyl liners (wrinkling, bleaching)

#### Moderate Sensitivity

- Quartz
- Fibreglass gelcoat
- Fluoropolymer paint

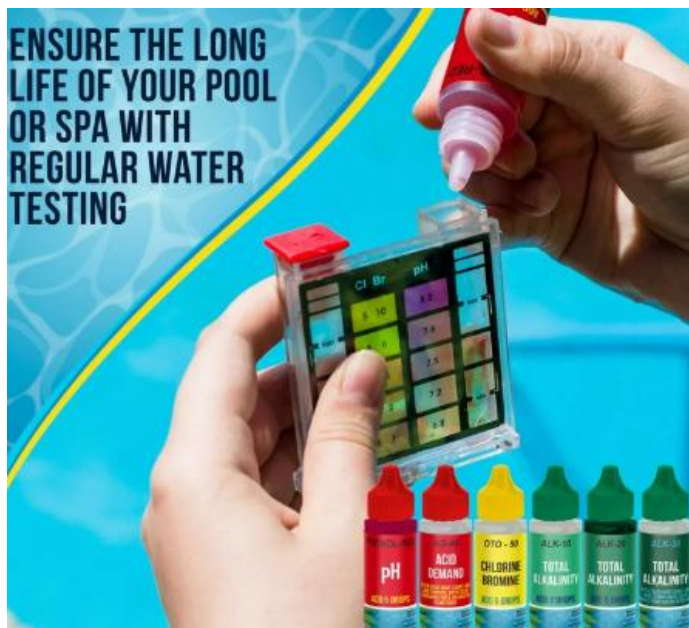
#### Low Sensitivity / Forgiving

- Pebblecrete
- Tiles

#### Booklet Tip:

If you're not a "test the pool every week" type, pick a durable, low-maintenance finish like pebblecrete or tiles.

---



## CHAPTER 5

### Repairability & Future Upgrade Options

Everything ages eventually — some surfaces repair beautifully, others don't.

#### Easy to Repair

- Vinyl liners (simple patch kits)
- Fibreglass (gelcoat patching)
- Tiles (replace one tile instead of the whole pool)

#### Hard to Repair Invisibly

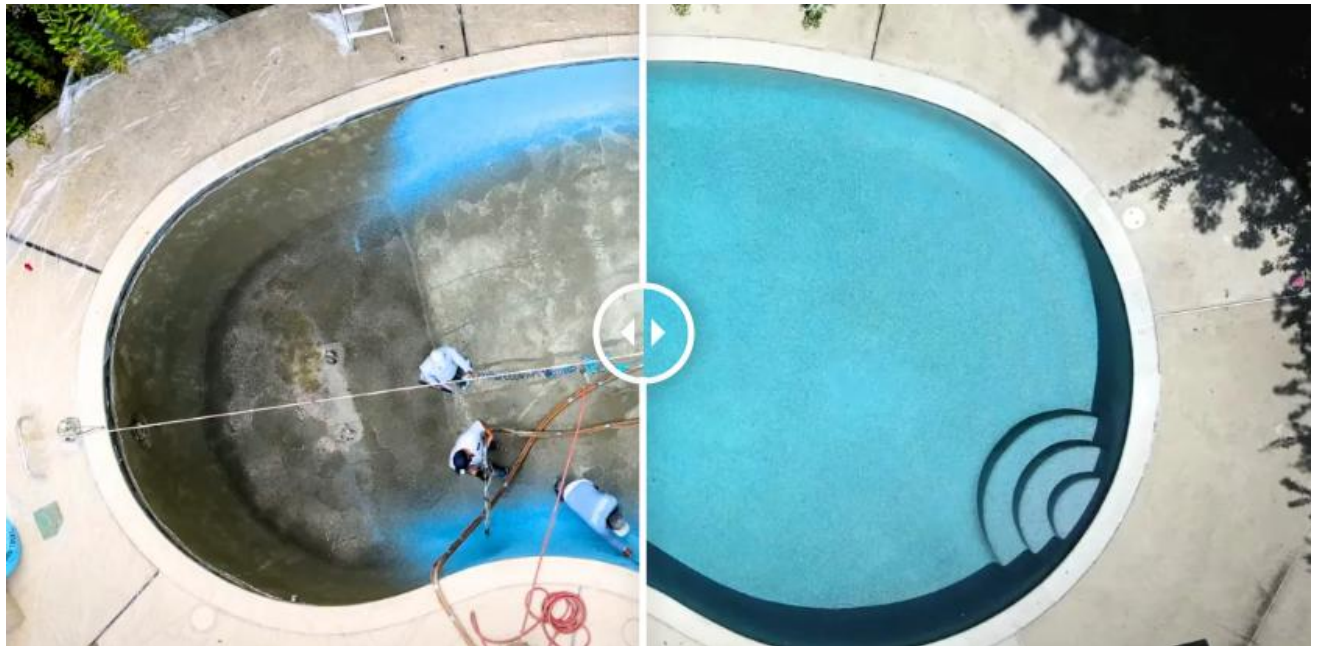
- Marblesheen
- Pebblecrete
- Quartz

#### Upgrade Pathways

- Painted pools → epoxy → fibreglass → pebble → tiles
- Vinyl → new liner → convert to fibreglass or pebble
- Old marblesheen → pebble, quartz or tiles

#### Booklet Tip:

Think of your pool as evolving. The right choice now gives you easier upgrades later.





## CHAPTER 6

What Aesthetic Are You Aiming For?

Your pool's surface sets the tone for the whole backyard.

### Bright & Classic

- Marblesheen

### Natural & Earthy

- Pebblecrete
- Larger-stone mixes

### Modern & Sparkly

- Quartz
- Glass-bead blends

### Glossy & Colour-Rich

- Fibreglass shells or resurfaced interiors

### Luxury Resort / Designer Look

- Full tile interiors
- Glass mosaics

### Booklet Tip:

Match your surface to your coping tiles, pavers, garden style and the architecture of your home.

---



## CHAPTER 7

### Installation Time — How Quickly Do You Want Your Pool Finished?\*\*

#### Fastest Options

*(Great for pre-summer deadlines)*

- Fibreglass shells (days)
- Vinyl liner replacements (1–2 days)
- Paint systems (1–3 days)

#### Moderate Timeframes

- Pebblecrete
- Quartz finishes  
(usually 3–7 days including curing)

#### Longest Installations

- Tiled interiors (2–4+ weeks depending on detail)

#### Booklet Tip:

If timing is tight, fibreglass or vinyl may keep your summer plans alive.

---



## **CHAPTER 8**

### **Surface-by-Surface Summary\*\***

A quick refresher on what each finish brings to the table.

#### **Pebblecrete**

- Extremely durable
- Natural look
- Long lifespan
- Slight texture unless polished

#### **Quartz**

- Smooth, modern finish
- More colour options
- Moderately durable
- Can mottle if chemistry is off

#### **Fibreglass**

- Smoothest everyday finish
- Very low maintenance
- Limited shapes
- Can fade over time

#### **Vinyl Liner**

- Cheapest renovation option
- Very smooth
- Shorter lifespan
- Easy to repair

#### **Painted Surfaces**

- Lowest cost
- Short- Medium term use
- Needs regular recoat
- Good for upgrades

#### **Tiles**

- Most premium



- Longest lifespan by far
- Easy repairs
- Expensive and slowest to install

## **Marblesheen**

- Classic, but outdated
  - Sensitive to chemistry
  - Hard to repair
  - Often replaced by modern finishes
- 



## CHAPTER 9

Which Surface Is Your Best Match?\*

### Best Budget Choice

- ✓ Vinyl liner
- ✓ Epoxy paint (short-term economics)

### Best Value Over 20–30 Years

- ✓ Pebblecrete
- ✓ Quartz
- ✓ Fibreglass resurfaced concrete pool

### Best for Lifetime Ownership

- ✓ Full interior tiling (ceramic, porcelain or glass)

### Best for Families with Kids

- ✓ Fibreglass
- ✓ Vinyl
- ✓ Tiles (non-slip options available)

### Best for Low-Maintenance Pool Owners

- ✓ Pebblecrete
- ✓ Tiles
- ✓ Fibreglass

---

## CONCLUSION

Your pool interior isn't just a surface — it's a commitment. The right finish enhances your home, reduces maintenance, and keeps your pool looking spectacular for decades. Consider your budget, how long you plan to stay in the home, how much time you want to spend maintaining water chemistry, and the overall look you're trying to achieve.

Whichever way you go, remember this golden rule:

**Good water balance (especially LSI management) is the secret to protecting every surface — from basic paint to top-end tiles.**

LSI? Want to know more about it, then see: <https://www.pooladvise.com.au/pool-water-issues/>